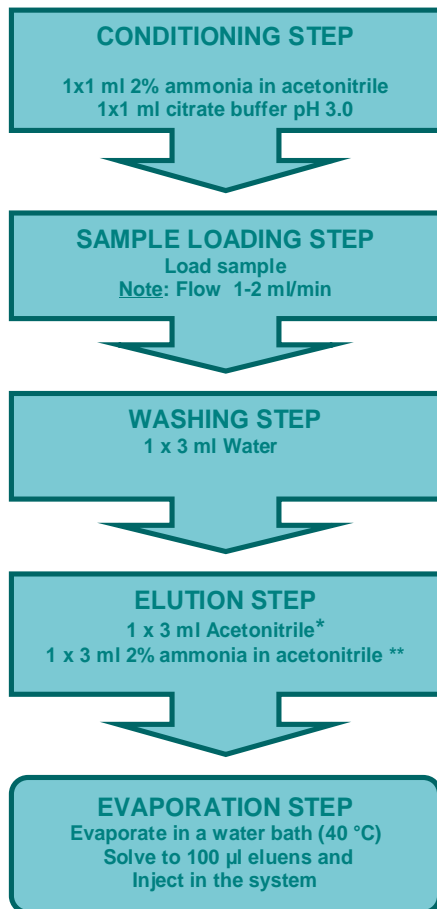




Systematic Toxicological Identification Procedure (STIP) as a TDM-method for Maprotiline and Desmethyl-Maprotiline in serum after Solid Phase Extraction

EXTRACTION PROTOCOL



SAMPLE MATRIX Serum

SORBENT BAKERBOND™ Speedisk C₁₈
Polar Plus 3ml/50 mg; PN 8153-04

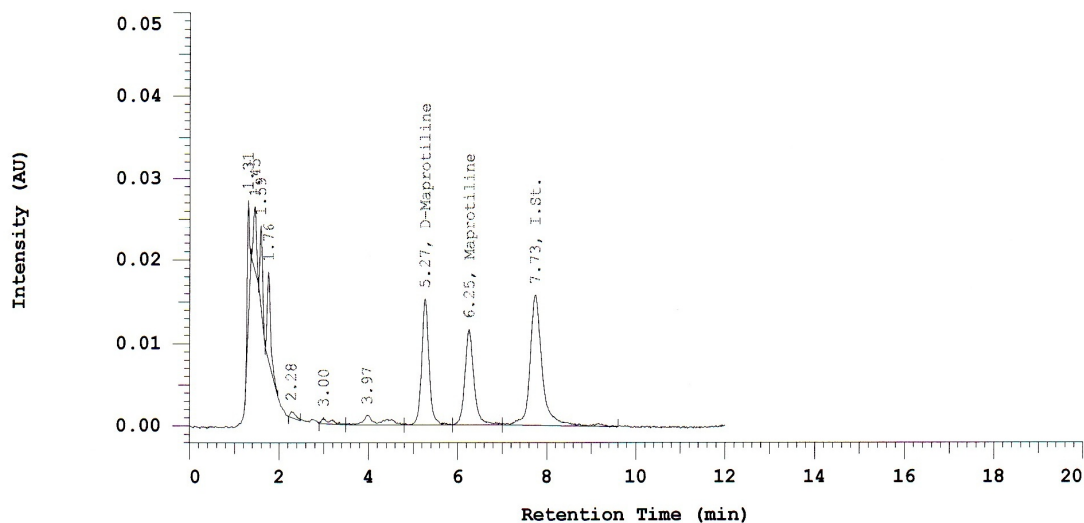
SAMPLE PREPARATION

To 1 ml of serum add 2 ml of internal standard solution of trimipramine. Internal standard solution is made by dissolving appropriate amount of trimipramine in citrate buffer pH 3.0 to obtain the concentration of 0.1 µg/ml of trimipramine. The sample is applied to the spe column.

- * A₁ fraction - elution of acidic and neutral compounds – vial 1
- ** A₂ fraction - elution of basic compounds – vial 2

FINAL ANALYTICAL METHOD: HPLC-DAD According to STIP

Chrom Type: Fixed WL Chromatogram, 205 nm



Peak Quantitation: HEIGHT

Calculation Method: INT-STD

RT	Area	Height	Purity	ID-Cor	Name	Conc 1 ug/L
5.27	88420	7650	0.9999		D-Maprotiline	99.3100
6.25	82780	5800	0.9998		Maprotiline	96.5700
7.73	150960	7903	0.9999		I.St. I	

For more information on STIP system and Solid Phase Extraction Procedure for drugs visit www.zanob.nl

For more info on Solid Phase Extraction Products and application database, visit www.jtbaker.com